

Adobe

Maple 16

OR-Math

Adobe
Acrobat X Pro

Notepad++

Visual
Statistics 2.2

FileZilla

AntiVirus

Maple 17

Scientific
Word 5.5

FreeFileSync

R
x64 3.3.0

Ct

e

Corel X4

Maple 18

Utilities

Google
Chrome

Seafiler

Game Theory

Maple 2015

Recycle Bin

HD
Writer AE
2.0

Skype

Graphics

Microsoft
Office 2010

Screen
Resolution.txt

Mozilla
Firefox

TrueCrypt

Open

Troubleshoot compatibility

Open file location



Run as administrator



Edit with Notepad++

Pin to Taskbar

Pin to Start Menu



Scan with Malwarebytes Anti-Malware

Restore previous versions



SUPERAntiSpyware



Send to



Cut

Copy

Create shortcut

Delete

Rename

Properties

Desktop >>



12:50
2016-06-16

R version 3.3.0 (2016-05-03) -- "Supposedly Educational"
Copyright (C) 2016 The R Foundation for Statistical Computing
Platform: x86_64-w64-mingw32/x64 (64-bit)

R is free software and comes with ABSOLUTELY NO WARRANTY.
You are welcome to redistribute it under certain conditions.
Type 'license()' or 'licence()' for distribution details.

Natural language support but running in an English locale

R is a collaborative project with many contributors.
Type 'contributors()' for more information and
'citation()' on how to cite R or R packages in publications.

Type 'demo()' for some demos, 'help()' for on-line help, or
'help.start()' for an HTML browser interface to help.
Type 'q()' to quit R.

> `install.packages("Rcmdr")` | 

R version 3.3.0 (2016-05-03) -- "Supp
Copyright (C) 2016 The R Foundation f
Platform: x86_64-w64-mingw32/x64 (64-

R is free software and comes with ABS
You are welcome to redistribute it un
Type 'license()' or 'licence()' for d

Natural language support but runnin

R is a collaborative project with man
Type 'contributors()' for more inform
'citation()' on how to cite R or R pa

Type 'demo()' for some demos, 'help()
'help.start()' for an HTML browser in
Type 'q()' to quit R.

> install.packages("Rcmdr")
--- Please select a CRAN mirror for u

HTTPS CRAN mirror

- 0-Cloud [https]
- Algeria [https]
- Austria [https]
- Belgium (Ghent) [https]
- Chile [https]
- China (Beijing 4) [https]
- Colombia (Cali) [https]
- France (Lyon 1) [https]
- France (Lyon 2) [https]
- France (Paris 2) [https]
- Germany (Münster) [https]
- Iceland [https]
- Italy (Padua) [https]
- Japan (Tokyo) [https]
- Malaysia [https]
- Mexico (Mexico City) [https]
- New Zealand [https]
- Russia (Moscow) [https]
- Serbia [https]
- Spain (A Coruña) [https]
- Spain (Madrid) [https]
- Switzerland [https]
- UK (Bristol) [https]
- UK (Cambridge) [https]
- USA (CA 1) [https]
- USA (KS) [https]
- USA (MI 1) [https]
- USA (TN) [https]
- USA (TX) [https]
- USA (WA) [https]

OK Cancel




```
R Console (64-bit)
File Edit Misc Packages Windows Help

package 'acepack' successfully unpacked and MD5 sums checked
package 'gtable' successfully unpacked and MD5 sums checked
package 'gridExtra' successfully unpacked and MD5 sums checked
package 'data.table' successfully unpacked and MD5 sums checked
package 'Rcpp' successfully unpacked and MD5 sums checked
package 'lme4' successfully unpacked and MD5 sums checked
package 'SparseM' successfully unpacked and MD5 sums checked
package 'MatrixModels' successfully unpacked and MD5 sums checked
package 'sandwich' successfully unpacked and MD5 sums checked
package 'colorspace' successfully unpacked and MD5 sums checked
package 'Hmisc' successfully unpacked and MD5 sums checked
package 'e1071' successfully unpacked and MD5 sums checked
package 'readxl' successfully unpacked and MD5 sums checked
package 'pbkrtest' successfully unpacked and MD5 sums checked
package 'quantreg' successfully unpacked and MD5 sums checked
package 'RcmdrMisc' successfully unpacked and MD5 sums checked
package 'car' successfully unpacked and MD5 sums checked
package 'tcltk2' successfully unpacked and MD5 sums checked
package 'abind' successfully unpacked and MD5 sums checked
package 'relimp' successfully unpacked and MD5 sums checked
package 'Rcmdr' successfully unpacked and MD5 sums checked

The downloaded binary packages are in
  C:\Users\parlar\AppData\Local\Temp\RtmpEZv6CF\downloaded_packages
> |
```




```
package 'acepack' successfully unpacked and MD5 sums checked
package 'gtable' successfully unpacked and MD5 sums checked
package 'gridExtra' successfully unpacked and MD5 sums checked
package 'data.table' successfully unpacked and MD5 sums checked
package 'Rcpp' successfully unpacked and MD5 sums checked
package 'lme4' successfully unpacked and MD5 sums checked
package 'SparseM' successfully unpacked and MD5 sums checked
package 'MatrixModels' successfully unpacked and MD5 sums checked
package 'sandwich' successfully unpacked and MD5 sums checked
package 'colorspace' successfully unpacked and MD5 sums checked
package 'Hmisc' successfully unpacked and MD5 sums checked
package 'e1071' successfully unpacked and MD5 sums checked
package 'readxl' successfully unpacked and MD5 sums checked
package 'pbkrtest' successfully unpacked and MD5 sums checked
package 'quantreg' successfully unpacked and MD5 sums checked
package 'RcmdrMisc' successfully unpacked and MD5 sums checked
package 'car' successfully unpacked and MD5 sums checked
package 'tcltk2' successfully unpacked and MD5 sums checked
package 'abind' successfully unpacked and MD5 sums checked
package 'relimp' successfully unpacked and MD5 sums checked
package 'Rcmdr' successfully unpacked and MD5 sums checked
```

The downloaded binary packages are in

C:\Users\parlar\AppData\Local\Temp\RtmpEZv6CF\downloaded_packages


> library(Rcmdr)|


```
R Console (64-bit)
File Edit Misc Packages Windows Help

package 'gtable' successfully unpacked and MD5 sums checked
package 'gridExtra' successfully unpacked and MD5 sums checked
package 'data.table' successfully unpacked and MD5 sums checked
package 'Rcpp' successfully unpacked and MD5 sums checked
package 'lme4' successfully unpacked and MD5 sums checked
package 'SparseM' successfully unpacked and MD5 sums checked
package 'MatrixModels' successfully unpacked and MD5 sums checked
package 'sandwich' successfully unpacked and MD5 sums checked
package 'colorspace' successfully unpacked and MD5 sums checked
package 'Hmisc' success
package 'e1071' success
package 'readxl' succes
package 'pbkrtest' succ
package 'quantreg' succ
package 'RcmdrMisc' suc
package 'car' successfu
package 'tcltk2' succes
package 'abind' success
package 'relimp' succes
package 'Rcmdr' success

The downloaded binary p
C:\Users\parlan
> library(Rcmdr)
```

76



The following packages used by Rcmdr are missing:
XLConnect, sem, rmarkdown, rglwidget, rgl, multcomp,
markdown, lmtest, leaps, knitr, effects, aplpack
Without these packages, some features will not be available.
Install these packages?

Yes No

76 Install Missing Packages

Install Packages From:

CRAN

Local package directory
(must include PACKAGES index file)

Specify package
directory:

Browse...

OK

Cancel

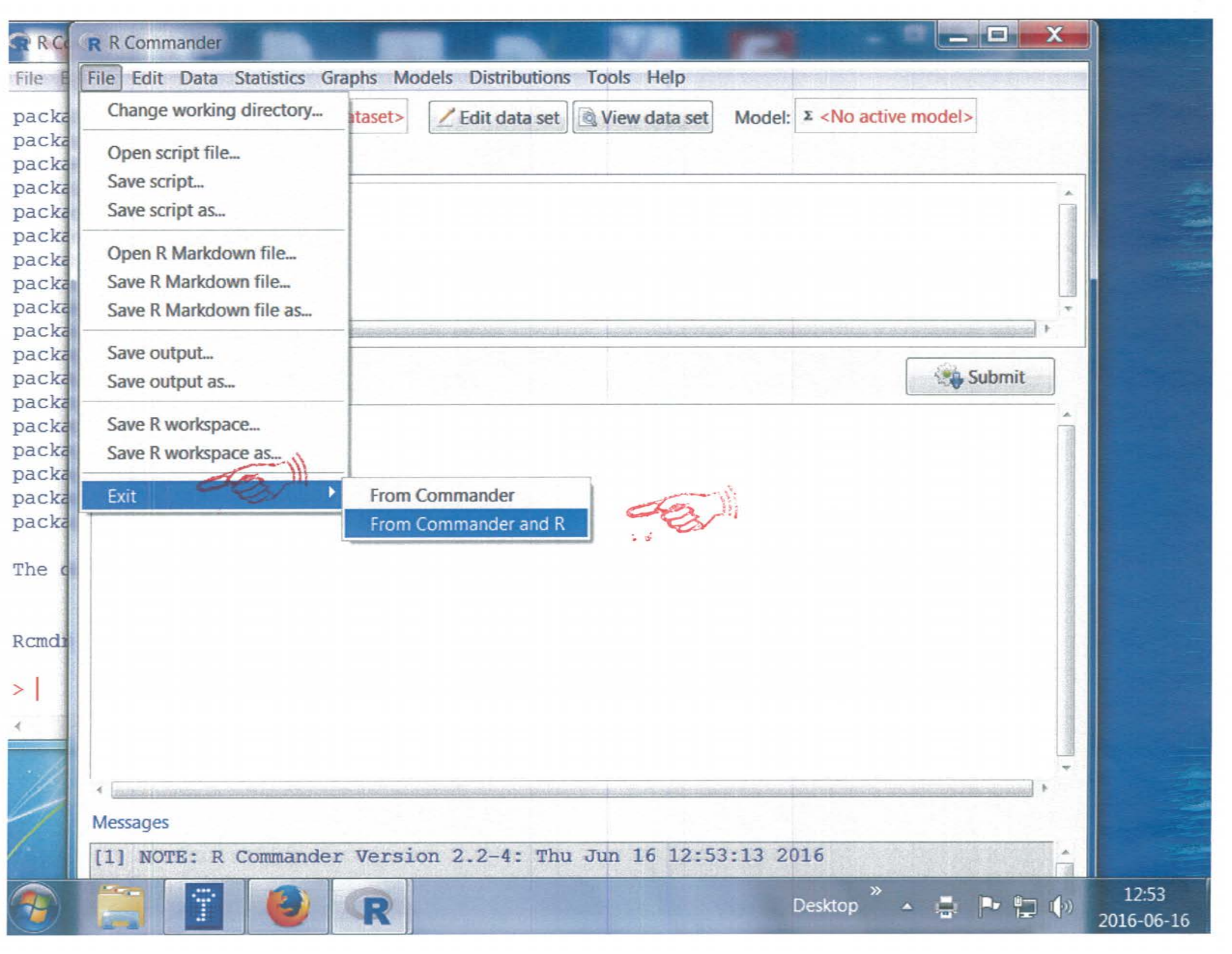
Help

package 'e1071' successfully unpacked and MD5 sums checked
package 'readxl' successfully unpacked and MD5 sums checked
package 'pbkrtest' successfully unpacked and MD5 sums checked
package 'quantreg' successfully unpacked and MD5 sums checked
package 'RcmdrMisc' successfully unpacked and MD5 sums checked
package 'car' successfully unpacked and MD5 sums checked
package 'tcltk2' successfully unpacked and MD5 sums checked
package 'abind' successfully unpacked and MD5 sums checked
package 'relimp' successfully unpacked and MD5 sums checked
package 'Rcmdr' successfully unpacked and MD5 sums checked

The downloaded binary packages are in

C:\Users\parlar\AppData\Local\Temp\RtmpEZv6CF\downloaded_packages

> library(Rcmdr)



File Edit Data Statistics Graphs Models Distributions Tools Help

Change working directory...

Open script file...

Save script...

Save script as...

Open R Markdown file...

Save R Markdown file...

Save R Markdown file as...

Save output...

Save output as...

Save R workspace...

Save R workspace as...

Exit

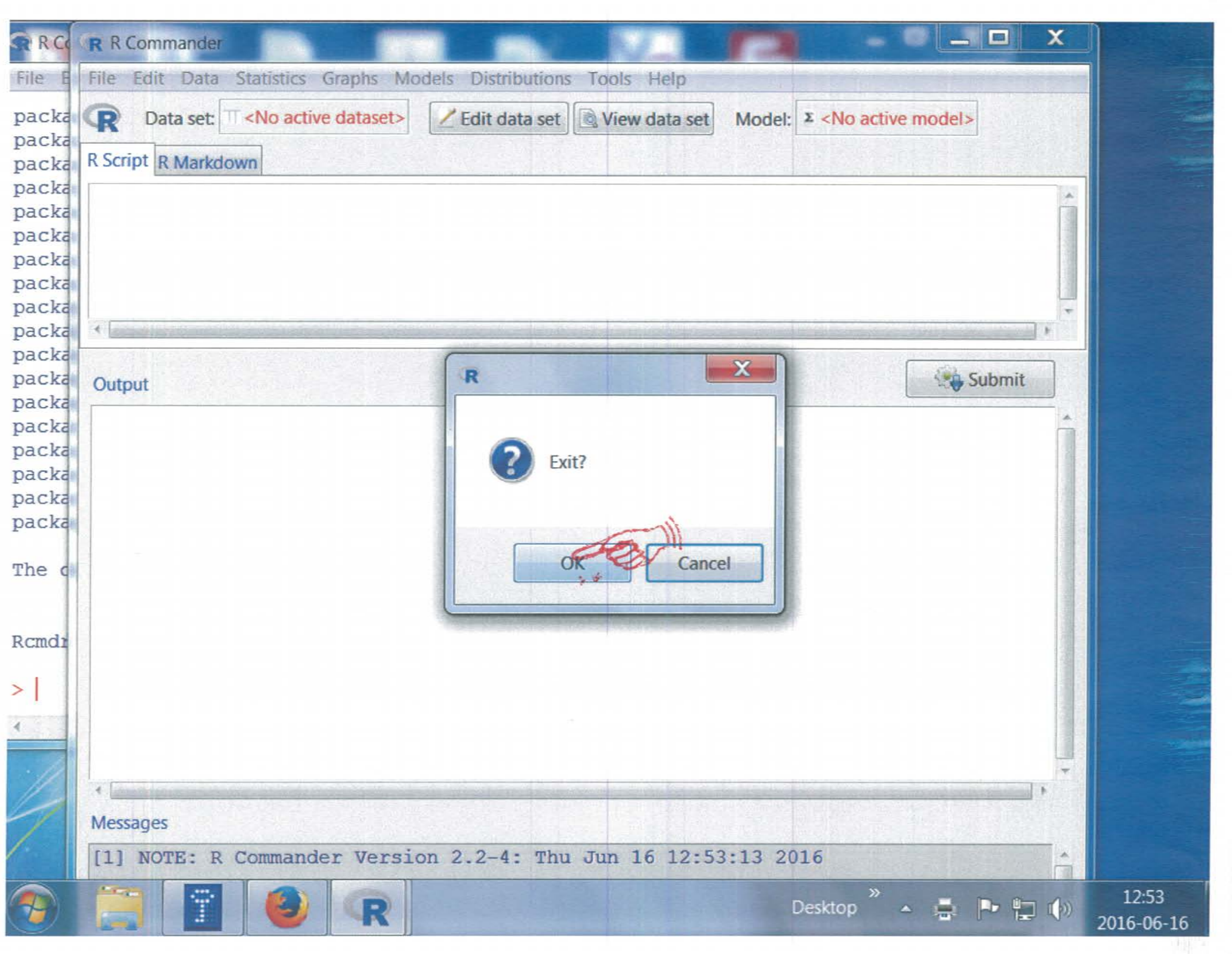
From Commander

From Commander and R

Submit

Messages

[1] NOTE: R Commander Version 2.2-4: Thu Jun 16 12:53:13 2016



Exit?

OK

Cancel

Submit

Output

Messages

[1] NOTE: R Commander Version 2.2-4: Thu Jun 16 12:53:13 2016

Desktop

12:53
2016-06-16